

Polimaster
Personal Radiation Detector

Connecting to a PC
via IrDA

Connecting a Personal Radiation Detector via IrDA.....	2
IrDA Connection Troubleshooting.....	3
Installing an IR-210 (Tekram) IrDA adapter under Windows 98.....	4
Verifying the installed IR-210 (Tekram) IrDA adapter.....	7

Connecting a Personal Radiation Detector via IrDA

All Polimaster Personal Radiation Detectors are equipped with an infra-red port, which makes it possible to connect them to a PC with an IrDA adapter.

To start the IR communication:

- Position the device near the computer IR-port so that the device face (where the IR port is located) is directly in front of the PC infra-red port window and there are no obstacles between them. The essential requirement for any IR communication is that the sender and receiver windows are in direct view of each other.
- Make sure that the PRD controller software is running (the corresponding icon is displayed in the system tray).
- Press the "Light" button on your PRD device.
- The connection should be established automatically. If you have problems connecting your device, please refer to the [troubleshooting](#) section of this document.

IrDA Connection Troubleshooting

Normally, there should not arise any trouble using an IrDA connection if the IrDA adapter and its drivers are installed correctly and are working properly with other IrDA-enabled devices. Most of the laptop computers and some desktops have a pre-installed built-in infra-red communications port, and the only operation required is to switch it on in the system BIOS. If there's no built-in IR port in your computer it is still possible to install a third-party one by simply plugging it into the COM or USB port. Any modern operation system, such as Windows XP or 2000, will then automatically recognize the connected IR port and install the required drivers. However, problems may arise in case you are using an outdated version of Windows, for example Windows 98. This troubleshooting guide includes step-by-step instructions on connecting an IrDA port to a computer running Windows 98 operation system. We have used the **IR-210 (Tekram)** IrDA adapter for this guide, it is supplied by Polimaster on demand with all the available detectors.

[Installing an **IR-210 \(Tekram\)** IrDA adapter under Windows 98 operation system](#)

Installing an IR-210 (Tekram) IrDA adapter under Windows 98

Attention

As the recommendations below deal with internal system settings and drivers it is essential that all the recommended actions are performed by a qualified computer service specialist or an advanced user. Before proceeding make sure to connect your IrDA adapter to one of the computer COM ports.

Disabling the ACPI function

Before installing the **IR-210 (Tekram)** IrDA adapter device drivers it is necessary to disable the ACPI function in BIOS and system registry, which is essential for the trouble-free operation of the adapter. ACPI (Advanced Configuration and Power [management] Interface) function can be found in the computer BIOS under the Power Management menu. If you cannot find this option in BIOS, just disable it in the Windows 98 registry as described below. Make sure to disable the ACPI function in the system registry even if you have already disabled it in BIOS.

Editing Windows 98 registry

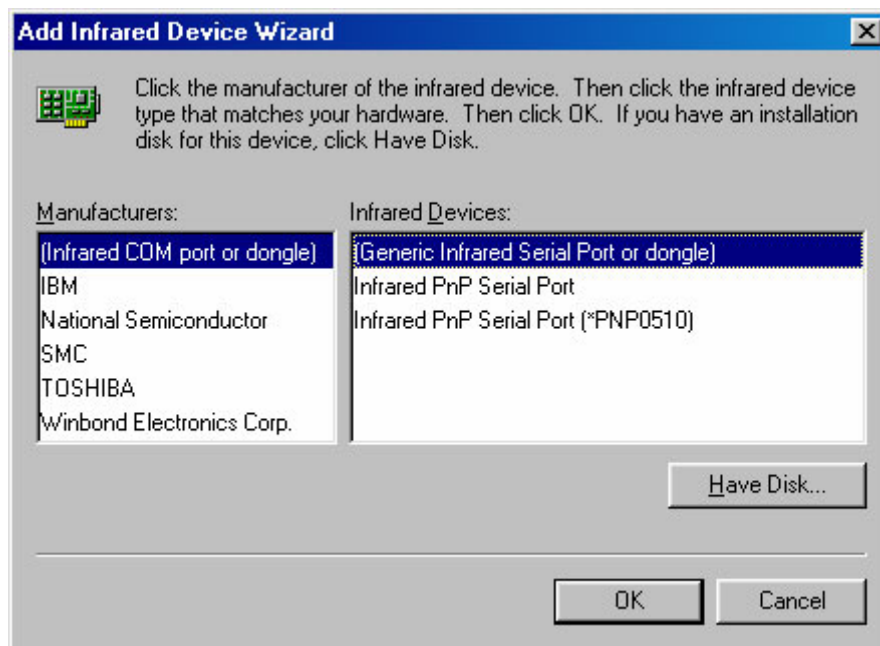
- To load the system registry editor select **Run** from the **Start** menu and type *regedit* in the command prompt.
- Browse the registry editor tree for the following folder:
HKEY_LOCAL_MACHINE\System\CurrentControlSet\services\VxD\VCOMM\
- Right-click on the *EnablePowerManagement* key and select **Modify** from the subsequent context menu.
- Change the key value to **00 00 00 00** to disable the ACPI function.

Installation of IR adapter IR-210 (Tekram) driver to MS Windows 98

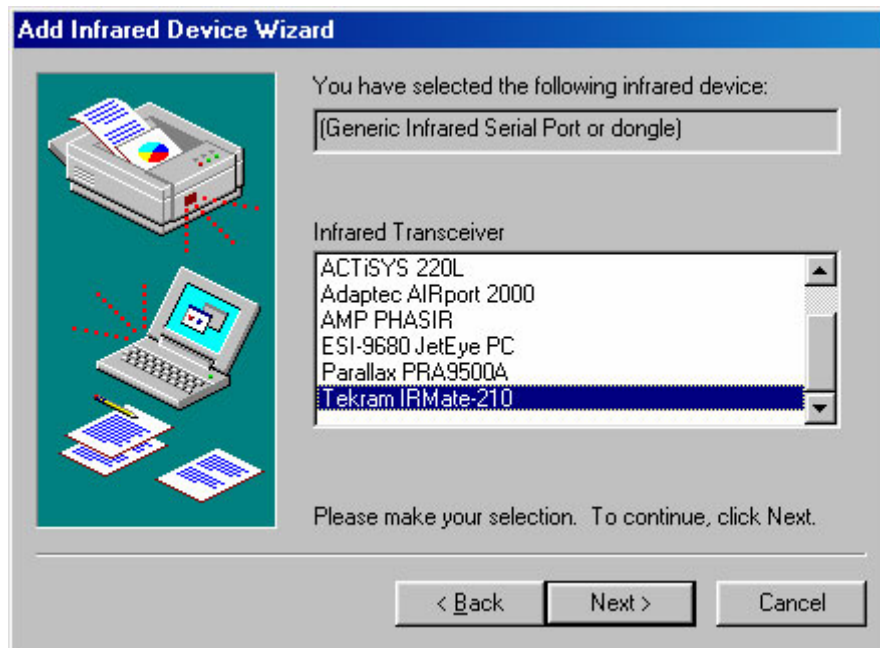
- To start the driver installation open Windows Control Panel by selecting **Start – Settings – Control Panel**.
- Double-click the **Add New Hardware** icon in the Control Panel. The **Add New Hardware** window will be displayed. Press **Next**.
- On the page asking "Do you want Windows to search for your new hardware?" select the "No, I want to select the hardware from a list" option. Press **Next**.
- Select **Infrared devices** or **Infrared** in the following page. Then press **Next**.



- Press **Next** until the following page is displayed, where it is necessary to select **(Infrared COM port or dongle)** from the manufacturers list and **(Generic Infrared Serial Port or dongle)** from the Infrared Devices list. Press **OK**.



- On the following page select the **Tekram IR Mate-210** device. Press **Next**.

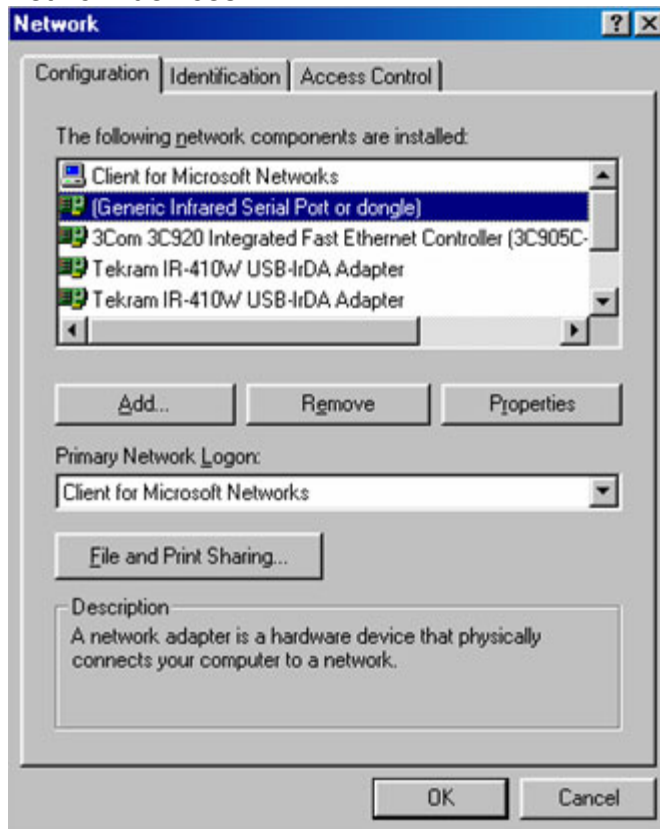


- In the next page select the communication port to which your IrDA adapter is physically connected. Press **Next**.
- In the page for selection of virtual COM and LPT ports select the **Use default ports (recommended)** option. Press **Next**.
- Insert the Windows 98 CD-ROM, then press **Finish** in the last wizard page. In case Windows 98 operating system was installed from another place, you will be prompted to specify the location of installation files.
- Restart your computer if prompted to.

Verifying the installed IR-210 (Tekram) IrDA adapter

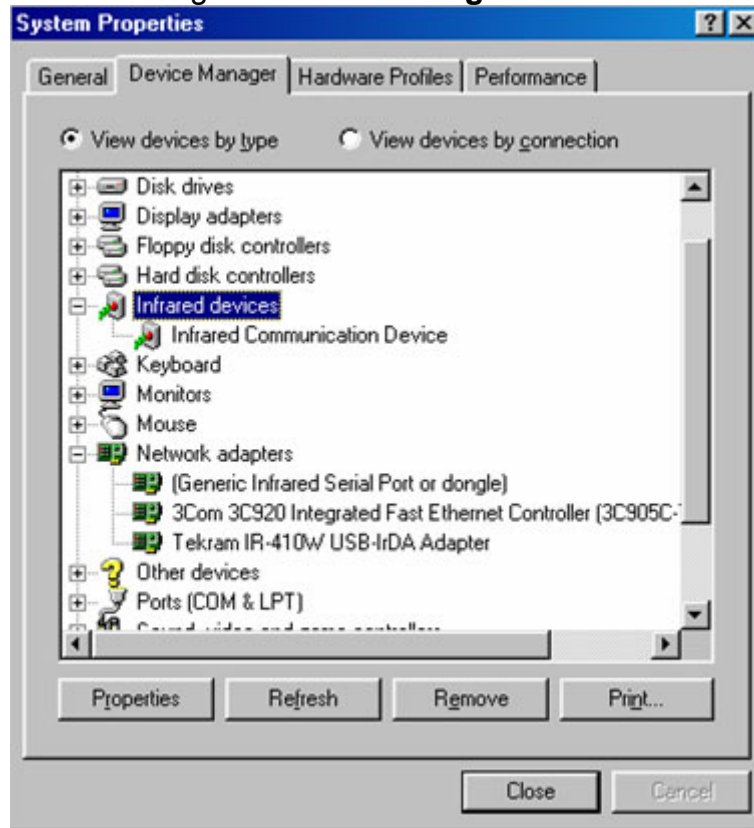
Perform the following routine to make sure that the infra-red adapter has been successfully installed:

- Open Windows Control Panel by selecting **Start – Settings – Control Panel**.
- Double click the **Network** icon.
- If the installation of the IR adapter was successful it will appear in the list of network devices:



- The properties of the installed IrDA adapter can be accessed by selecting it in the list and pressing the **Properties** button.
- Also the installed IrDA adapter should appear in the system devices list, which can be accessed by double-clicking the **System** icon in the Control Panel and

then selecting the **Device Manager** tab:



If any problems arise the IR device installation, it should be deleted from the system, and the [installation process](#) should be performed again. To delete the IR device from the system select the device and the corresponding network adapter in the Devices list (see above), then press the **Remove** button.

If IR communication does not work after several installations, try one of the following solutions:

- Install Windows 2000 or Windows XP on your PC, and enable the Plug and Play device support in BIOS. IR communication devices are found easily under the latest versions of Windows when the adapter is connected.
- Check the PC hardware, if it is out of order the PC must be repaired.